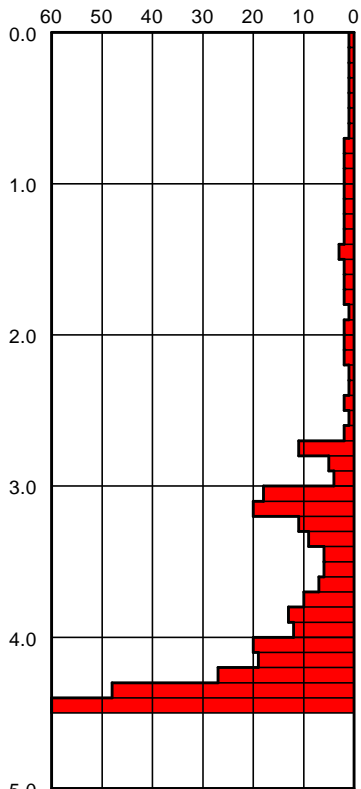


### DPH 1/2023

532,32 m NN

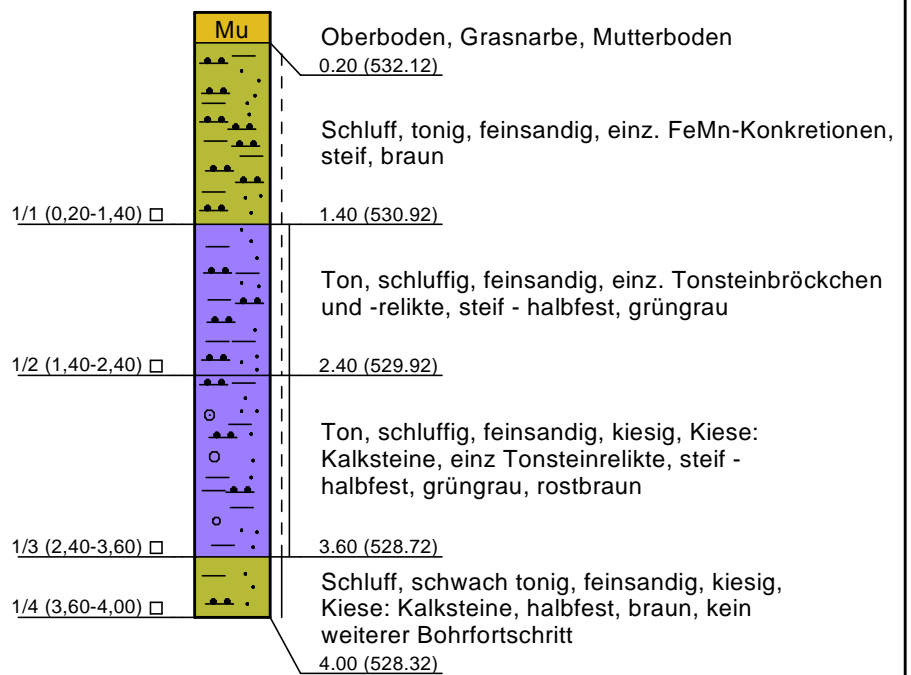
Schlagzahlen je 10 cm



20.03.23/Schl/bei 4,50 m 60 Schläge

### BS 1/2023

532,32 m NN

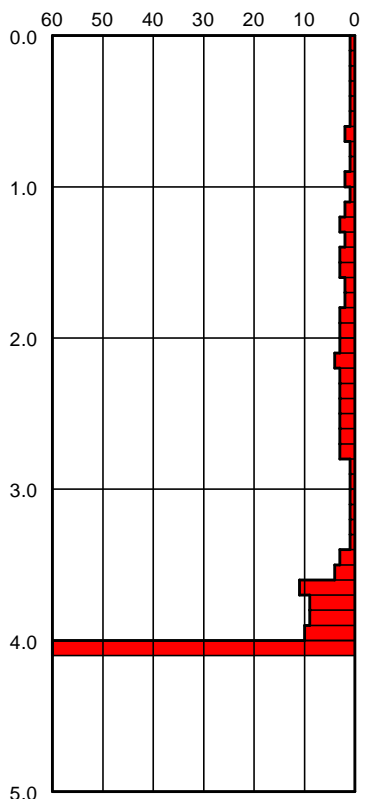


20.03.2023/M. Gecek/M 1: 50

### DPH 2b/2023

528,94 m NN

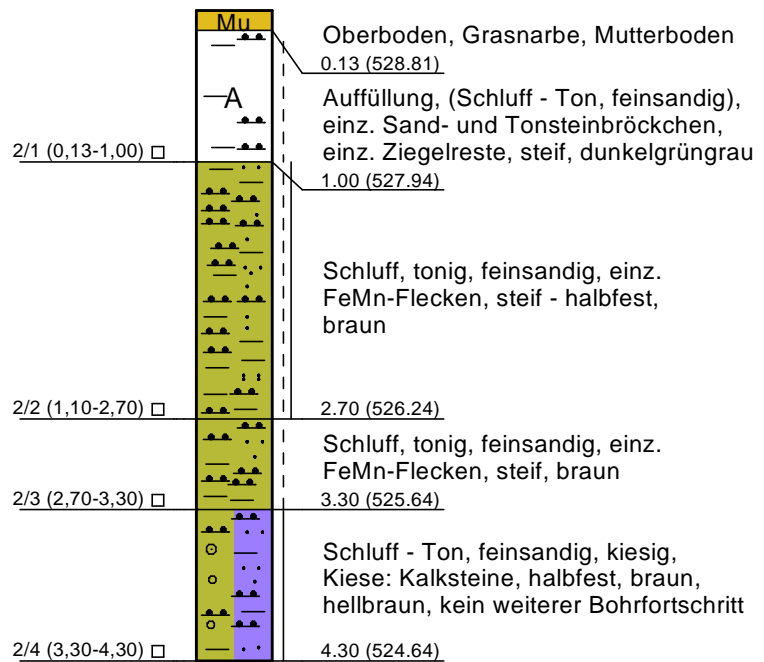
Schlagzahlen je 10 cm



20.03.23/Schl/bei 4,10 m 60 Schläge

### BS 2/2023

528,94 m NN

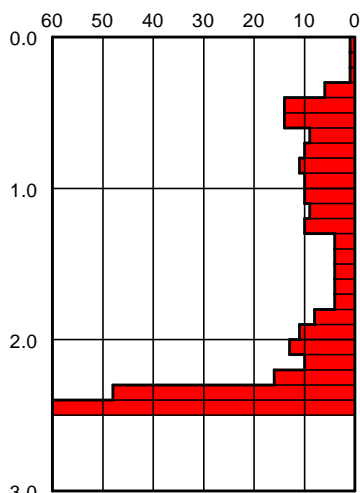


20.03.2023/M. Gecek/M 1: 50

### DPH 3/2023

526,92 m NN

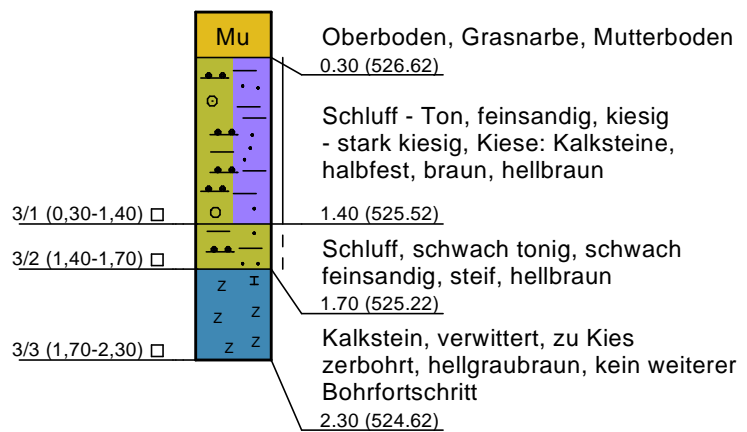
Schlagzahlen je 10 cm



20.03.23/Schl/bei 2,50 m 60 Schläge auf 7 cm

### BS 3/2023

526,92 m NN

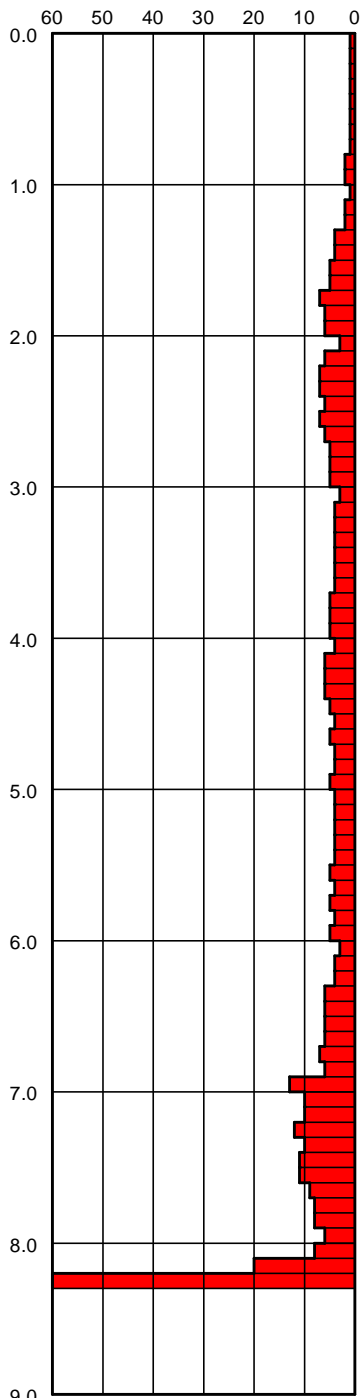


20.03.2023/M. Gecek/M 1: 50

### DPH 4/2023

528,40 m NN

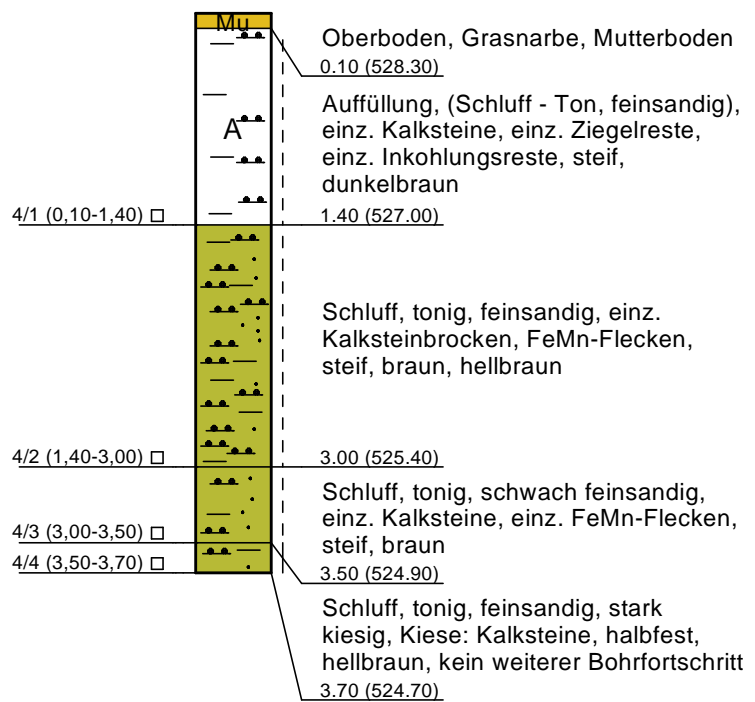
Schlagzahlen je 10 cm



20.03.23/Schl/bei 8,30 m 60 Schläge auf 7 cm

### BS 4/2023

528,40 m NN

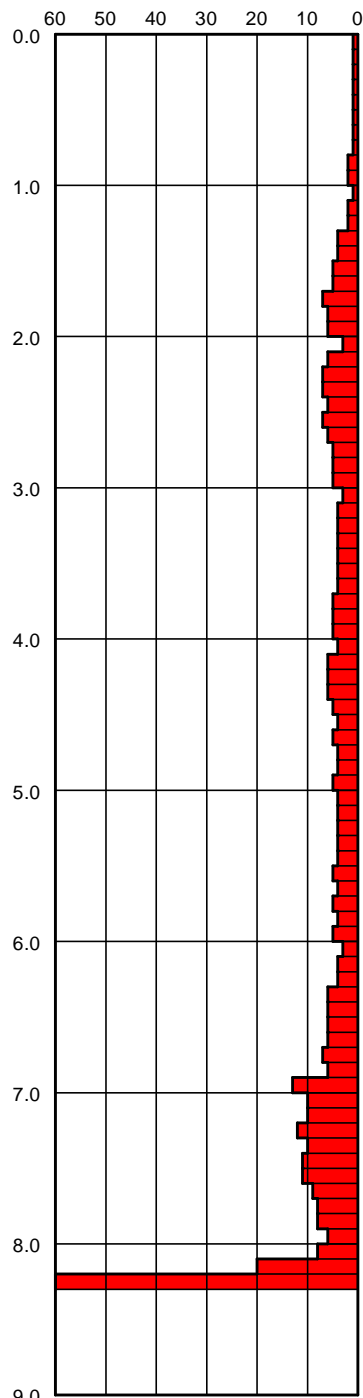


20.03.2023/M. Gecek/M 1: 50

## DPH 4/2023

528,40 m NN

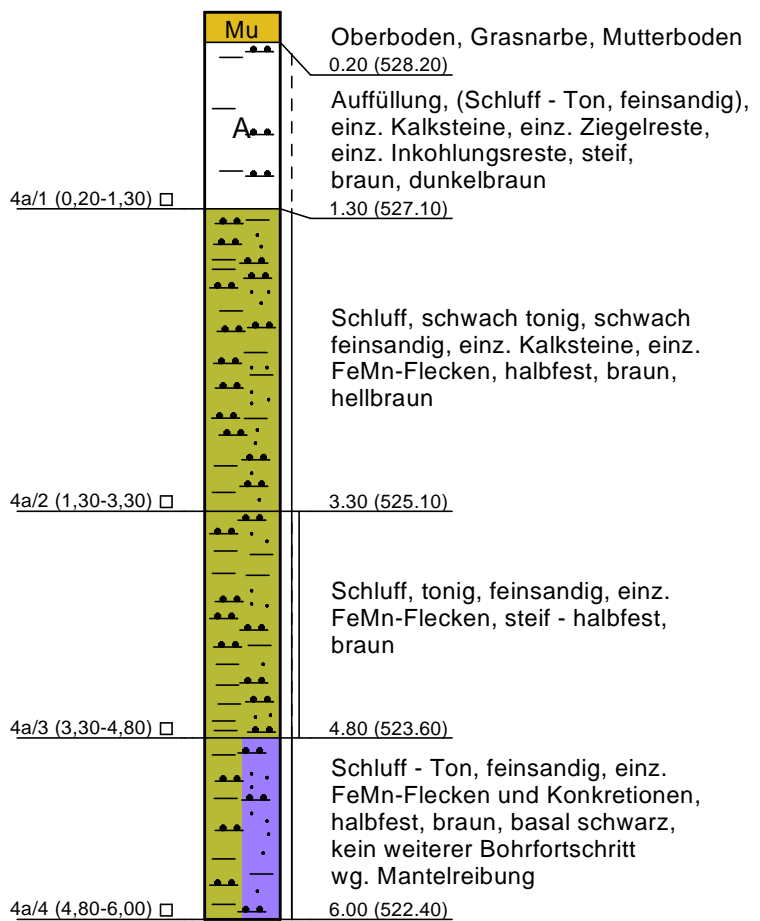
Schlagzahlen je 10 cm



20.03.23/Schl/bei 8,30 m 60 Schläge auf 7 cm

## BS 4a/2023

528,40 m NN

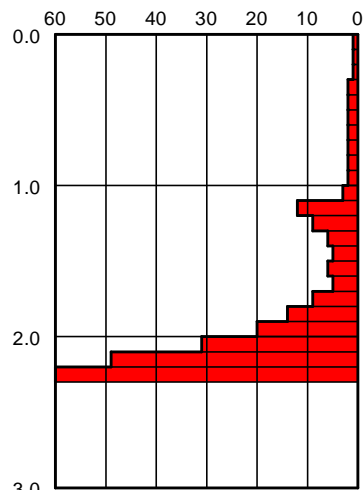


20.03.2023/M. Gecek/M 1: 50

### DPH 5/2023

525,86 m NN

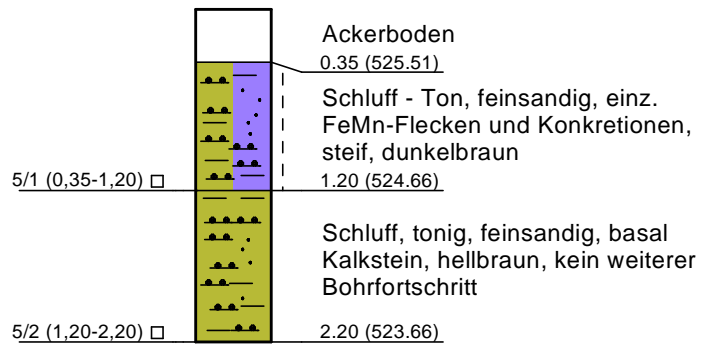
Schlagzahlen je 10 cm



3.0  
20.03.23/Schl/bei 2,30 m 60 Schläge auf 3 cm

### BS 5/2023

525,86 m NN

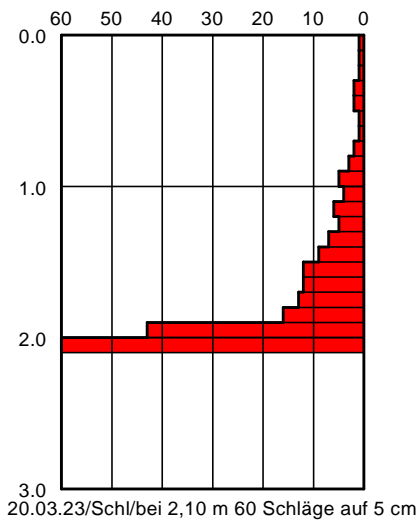


20.03.2023/M. Gecek/M 1: 50

### DPH 6/2023

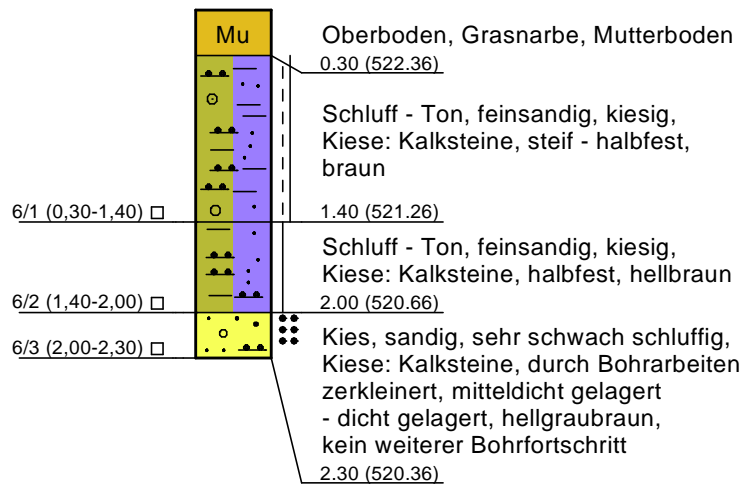
522,66 m NN

Schlagzahlen je 10 cm



### BS 6/2023

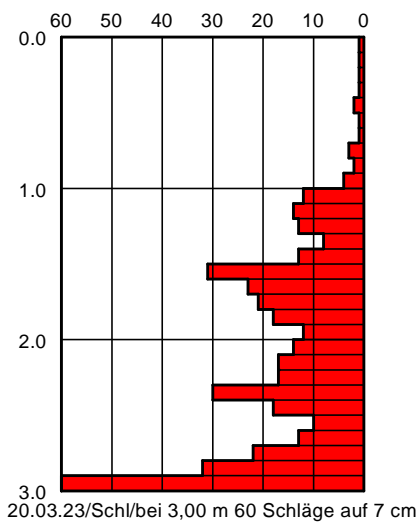
522,66 m NN



### DPH 7a/2023

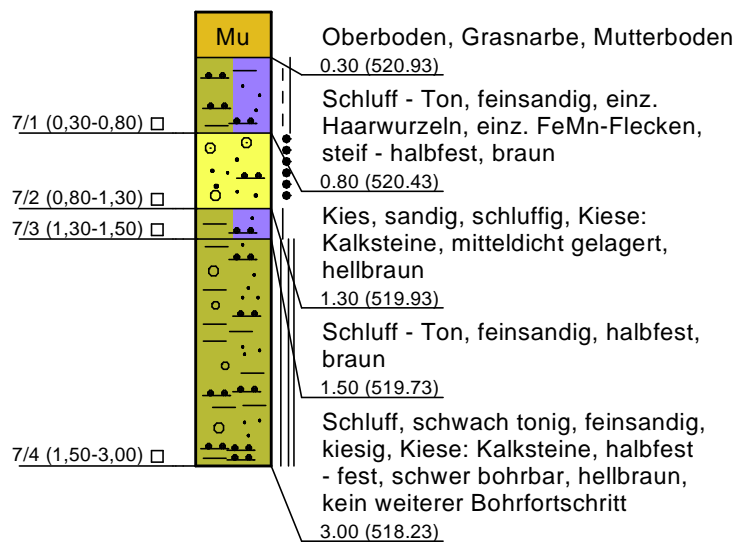
521,23 m NN

Schlagzahlen je 10 cm



### BS 7a/2023

521,23 m NN

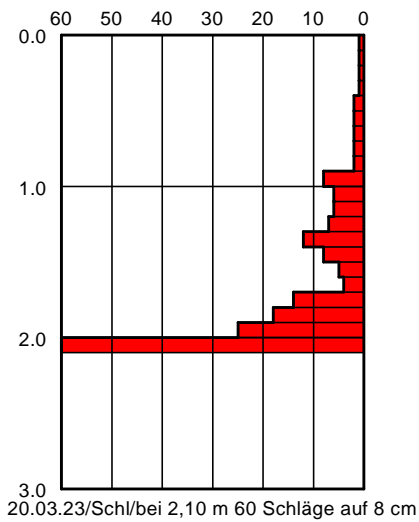




### DPH 8/2023

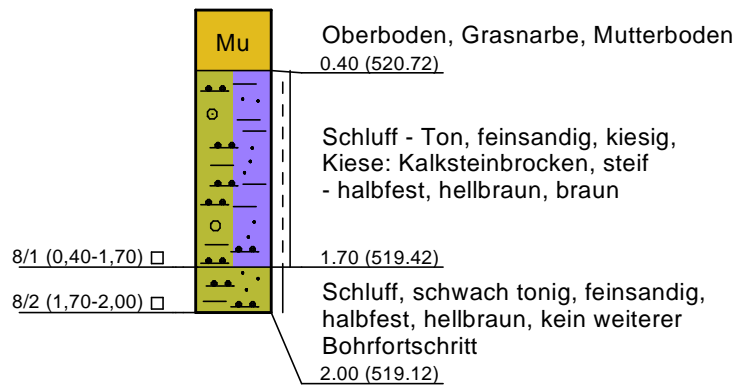
521,12 m NN

Schlagzahlen je 10 cm



### BS 8/2023

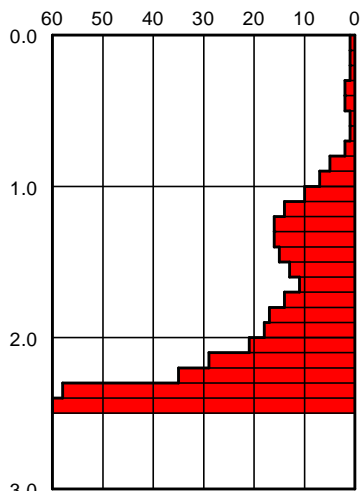
521,12 m NN



### DPH 9/2023

516,01 m NN

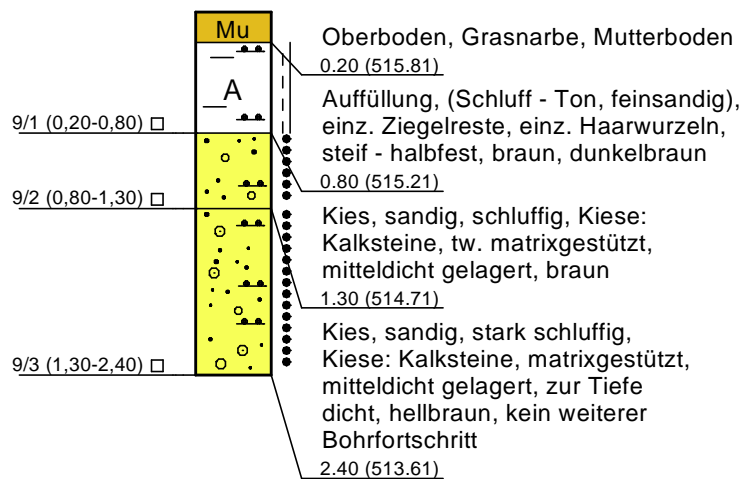
Schlagzahlen je 10 cm



20.03.23/Schl/bei 2,50 m 60 Schläge auf 6 cm

### BS 9/2023

516,01 m NN



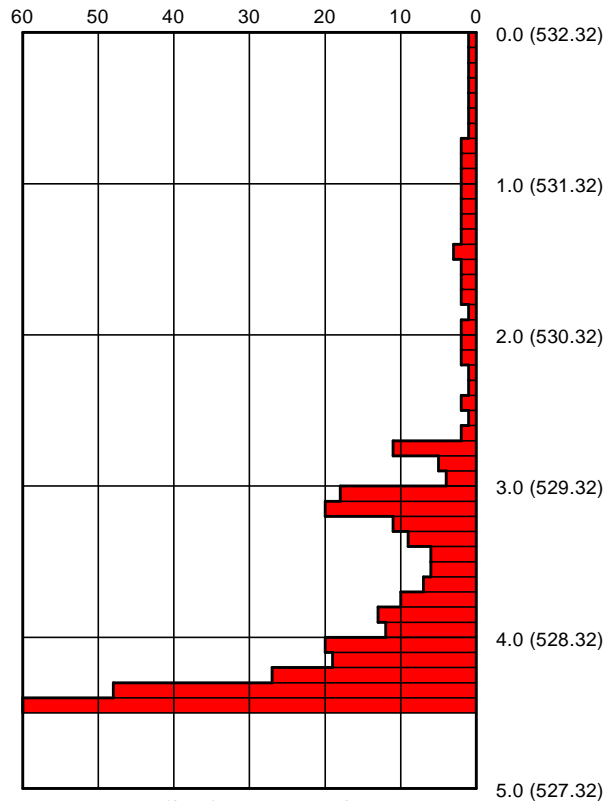
20.03.2023/M. Gecek/M 1: 50

# DPH 1/2023

532,32 m NN

Schlagzahlen je 10 cm

Tiefe [m]	N <sub>10</sub>
0.10	1
0.20	1
0.30	1
0.40	1
0.50	1
0.60	1
0.70	1
0.80	2
0.90	2
1.00	2
1.10	2
1.20	2
1.30	2
1.40	2
1.50	3
1.60	2
1.70	2
1.80	2
1.90	1
2.00	2
2.10	2
2.20	2
2.30	1
2.40	1
2.50	2
2.60	1
2.70	2
2.80	11
2.90	5
3.00	4
3.10	18
3.20	20
3.30	11
3.40	9
3.50	6
3.60	6
3.70	7
3.80	10
3.90	13
4.00	12
4.10	20
4.20	19
4.30	27
4.40	48
4.50	60

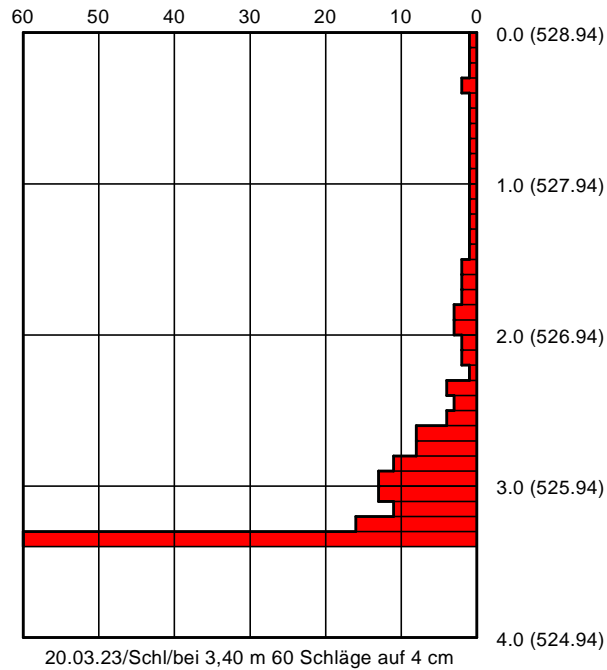


## DPH 2/2023

528,94 m NN

Schlagzahlen je 10 cm

Tiefe [m]	N <sub>10</sub>
0.10	1
0.20	1
0.30	1
0.40	2
0.50	1
0.60	1
0.70	1
0.80	1
0.90	1
1.00	1
1.10	1
1.20	1
1.30	1
1.40	1
1.50	1
1.60	2
1.70	2
1.80	2
1.90	3
2.00	3
2.10	2
2.20	2
2.30	1
2.40	4
2.50	3
2.60	4
2.70	8
2.80	8
2.90	11
3.00	13
3.10	13
3.20	11
3.30	16
3.40	60

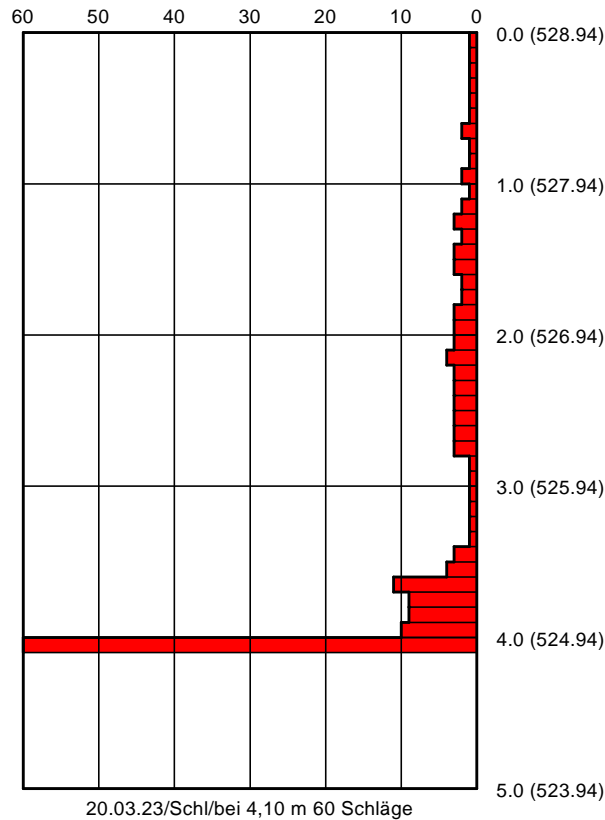


## DPH 2a/2023

528,94 m NN

Schlagzahlen je 10 cm

Tiefe [m]	N <sub>10</sub>
0.10	1
0.20	1
0.30	1
0.40	1
0.50	1
0.60	1
0.70	2
0.80	1
0.90	1
1.00	2
1.10	1
1.20	2
1.30	3
1.40	2
1.50	3
1.60	3
1.70	2
1.80	2
1.90	3
2.00	3
2.10	3
2.20	4
2.30	3
2.40	3
2.50	3
2.60	3
2.70	3
2.80	3
2.90	1
3.00	1
3.10	1
3.20	1
3.30	1
3.40	1
3.50	3
3.60	4
3.70	11
3.80	9
3.90	9
4.00	10
4.10	60

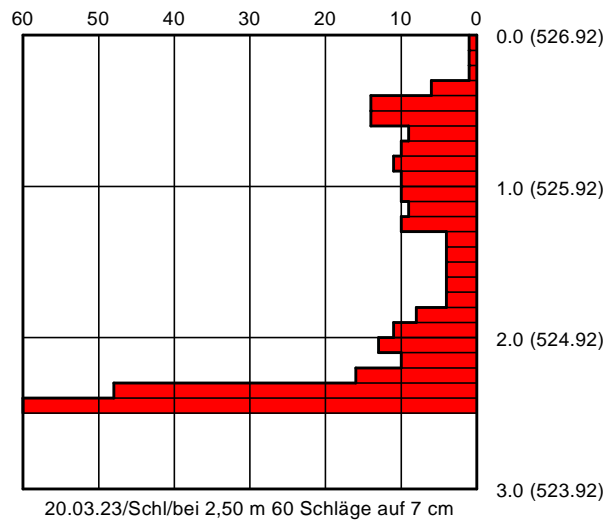


## DPH 3/2023

526,92 m NN

Schlagzahlen je 10 cm

Tiefe [m]	N <sub>10</sub>
0.10	1
0.20	1
0.30	1
0.40	6
0.50	14
0.60	14
0.70	9
0.80	10
0.90	11
1.00	10
1.10	10
1.20	9
1.30	10
1.40	4
1.50	4
1.60	4
1.70	4
1.80	4
1.90	8
2.00	11
2.10	13
2.20	10
2.30	16
2.40	48
2.50	60

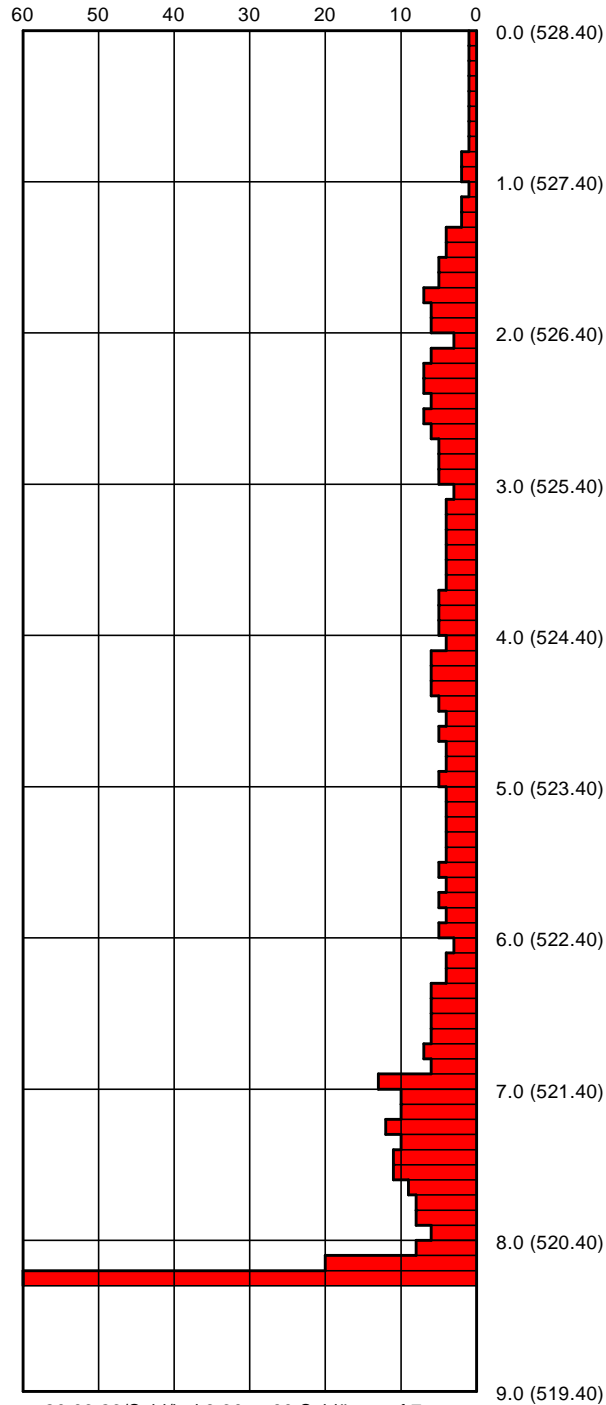


# DPH 4/2023

528,40 m NN

Schlagzahlen je 10 cm

Tiefe [m]	N <sub>10</sub>	Tiefe [m]	N <sub>10</sub>
0.10	1	5.10	4
0.20	1	5.20	4
0.30	1	5.30	4
0.40	1	5.40	4
0.50	1	5.50	4
0.60	1	5.60	5
0.70	1	5.70	4
0.80	1	5.80	5
0.90	2	5.90	4
1.00	2	6.00	5
1.10	1	6.10	3
1.20	2	6.20	4
1.30	2	6.30	4
1.40	4	6.40	6
1.50	4	6.50	6
1.60	5	6.60	6
1.70	5	6.70	6
1.80	7	6.80	7
1.90	6	6.90	6
2.00	6	7.00	13
2.10	3	7.10	10
2.20	6	7.20	10
2.30	7	7.30	12
2.40	7	7.40	10
2.50	6	7.50	11
2.60	7	7.60	11
2.70	6	7.70	9
2.80	5	7.80	8
2.90	5	7.90	8
3.00	5	8.00	6
3.10	3	8.10	8
3.20	4	8.20	20
3.30	4	8.30	60
3.40	4		
3.50	4		
3.60	4		
3.70	4		
3.80	5		
3.90	5		
4.00	5		
4.10	4		
4.20	6		
4.30	6		
4.40	6		
4.50	5		
4.60	4		
4.70	5		
4.80	4		
4.90	4		
5.00	5		



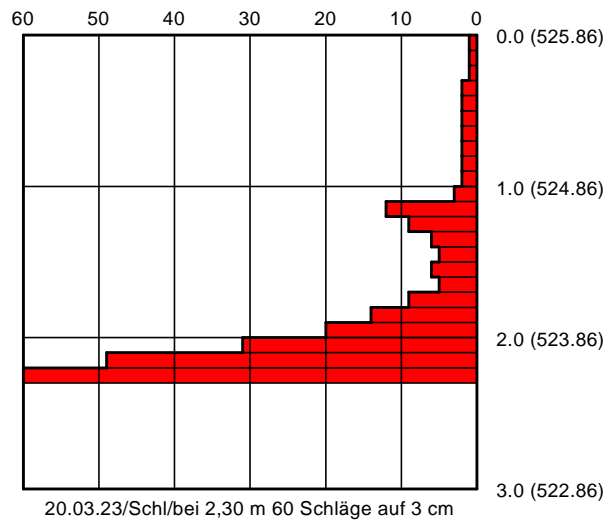
20.03.23/Schl/bei 8,30 m 60 Schläge auf 7 cm

## DPH 5/2023

525,86 m NN

Schlagzahlen je 10 cm

Tiefe [m]	N <sub>10</sub>
0.10	1
0.20	1
0.30	1
0.40	2
0.50	2
0.60	2
0.70	2
0.80	2
0.90	2
1.00	2
1.10	3
1.20	12
1.30	9
1.40	6
1.50	5
1.60	6
1.70	5
1.80	9
1.90	14
2.00	20
2.10	31
2.20	49
2.30	60



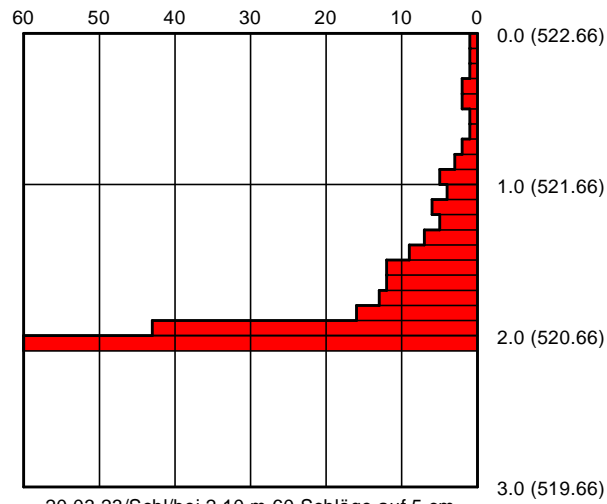


## DPH 6/2023

522,66 m NN

Schlagzahlen je 10 cm

Tiefe [m]	N <sub>10</sub>
0.10	1
0.20	1
0.30	1
0.40	2
0.50	2
0.60	1
0.70	1
0.80	2
0.90	3
1.00	5
1.10	4
1.20	6
1.30	5
1.40	7
1.50	9
1.60	12
1.70	12
1.80	13
1.90	16
2.00	43
2.10	60



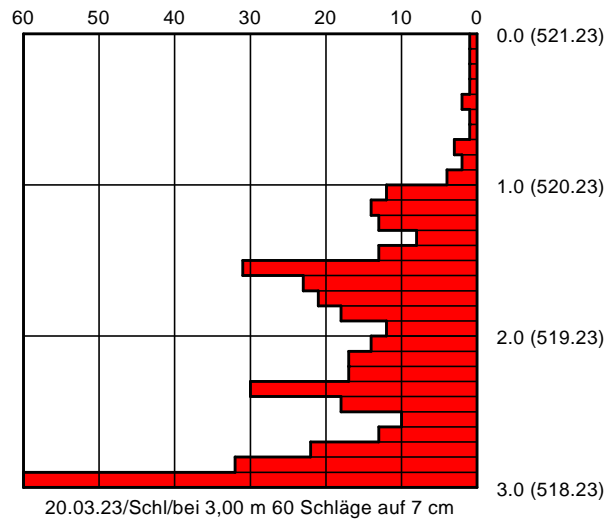
20.03.23/Schl/bei 2,10 m 60 Schläge auf 5 cm

## DPH 7a/2023

521,23 m NN

Schlagzahlen je 10 cm

Tiefe [m]	N <sub>10</sub>
0.10	1
0.20	1
0.30	1
0.40	1
0.50	2
0.60	1
0.70	1
0.80	3
0.90	2
1.00	4
1.10	12
1.20	14
1.30	13
1.40	8
1.50	13
1.60	31
1.70	23
1.80	21
1.90	18
2.00	12
2.10	14
2.20	17
2.30	17
2.40	30
2.50	18
2.60	10
2.70	13
2.80	22
2.90	32
3.00	60

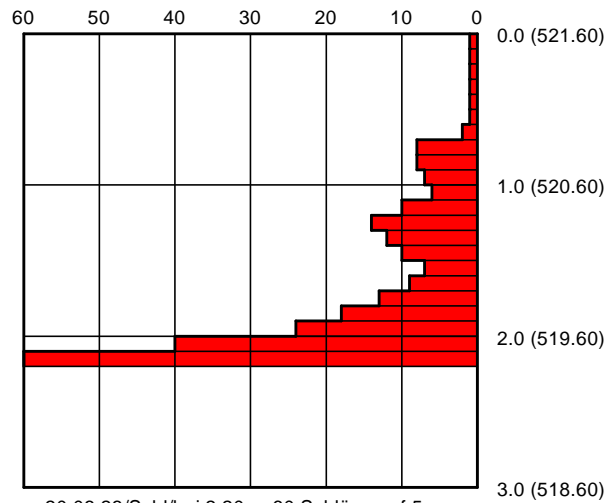


## DPH 7b/2023

521,60 m NN

Schlagzahlen je 10 cm

Tiefe [m]	N <sub>10</sub>
0.10	1
0.20	1
0.30	1
0.40	1
0.50	1
0.60	1
0.70	2
0.80	8
0.90	8
1.00	7
1.10	6
1.20	10
1.30	14
1.40	12
1.50	10
1.60	7
1.70	9
1.80	13
1.90	18
2.00	24
2.10	40
2.20	60

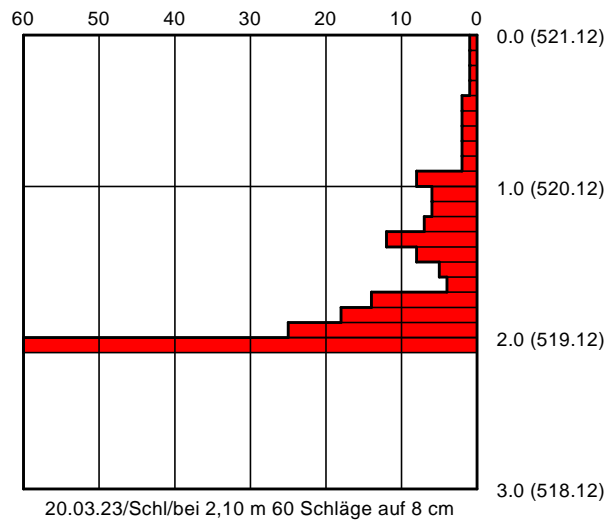


## DPH 8/2023

521,12 m NN

Schlagzahlen je 10 cm

Tiefe [m]	N <sub>10</sub>
0.10	1
0.20	1
0.30	1
0.40	1
0.50	2
0.60	2
0.70	2
0.80	2
0.90	2
1.00	8
1.10	6
1.20	6
1.30	7
1.40	12
1.50	8
1.60	5
1.70	4
1.80	14
1.90	18
2.00	25
2.10	60



## DPH 9/2023

516,01 m NN

Schlagzahlen je 10 cm

Tiefe [m]	N <sub>10</sub>
0.10	1
0.20	1
0.30	1
0.40	2
0.50	2
0.60	1
0.70	1
0.80	2
0.90	5
1.00	7
1.10	10
1.20	14
1.30	16
1.40	16
1.50	15
1.60	13
1.70	11
1.80	14
1.90	17
2.00	18
2.10	21
2.20	29
2.30	35
2.40	58
2.50	60

